

KERRIGAN SUBDIVISION

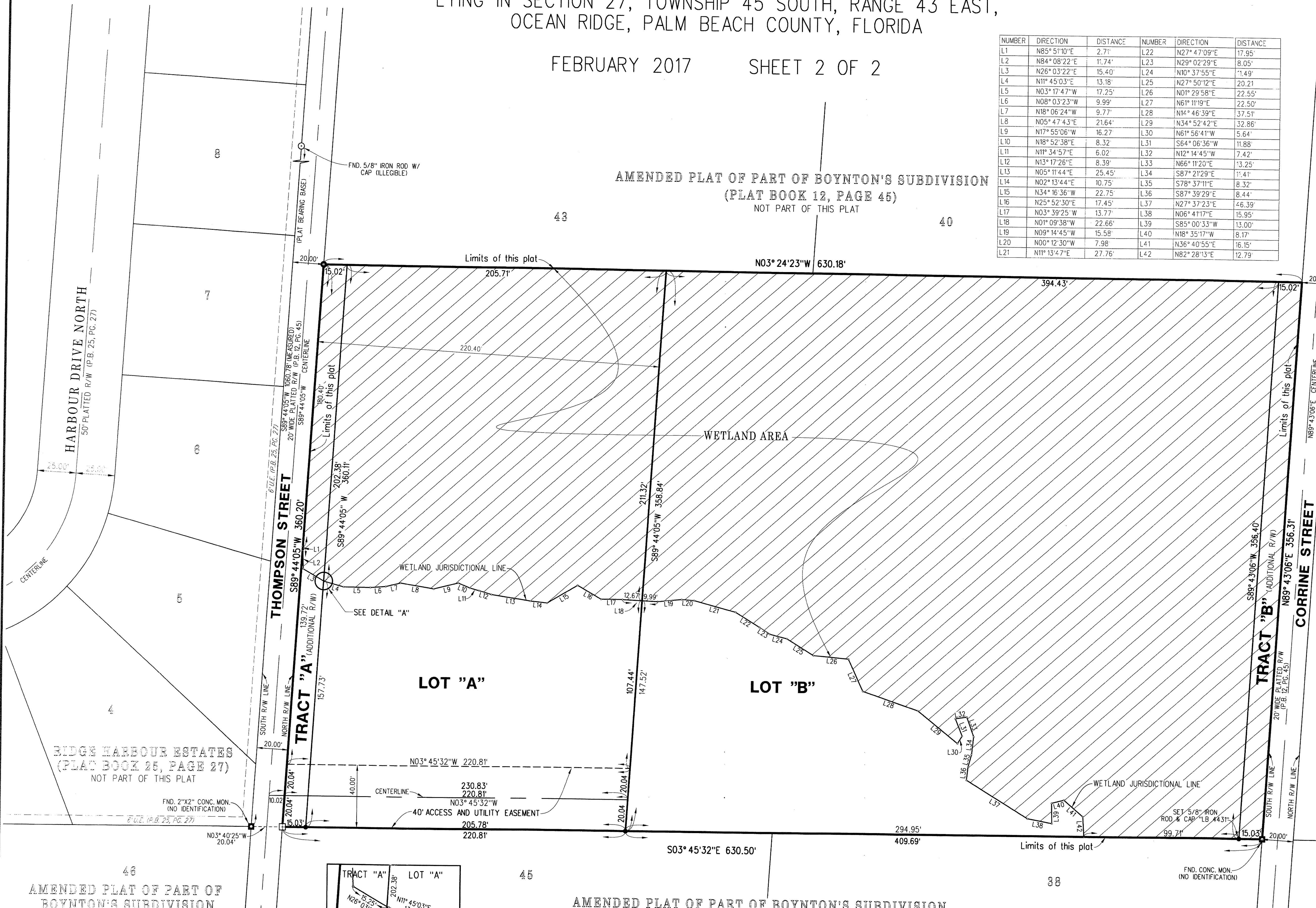
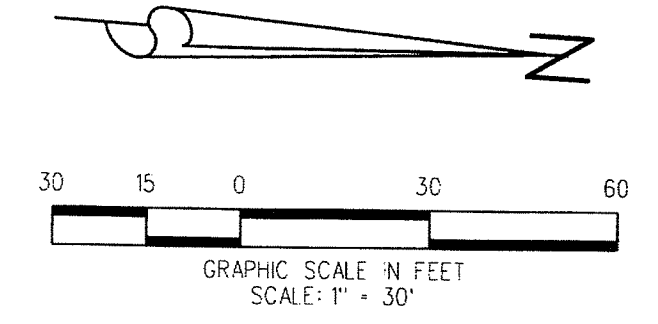
BEING A REPLAT OF LOTS 39 AND 44, AS SHOWN ON THE AMENDED PLAT OF PART OF BOYNTON'S SUBDIVISION, RECORDED IN PLAT BOOK 12, PAGE 45, PUBLIC RECORDS OF PALM BEACH COUNTY, FLORIDA, LYING IN SECTION 27, TOWNSHIP 45 SOUTH, RANGE 43 EAST, OCEAN RIDGE, PALM BEACH COUNTY, FLORIDA

FEBRUARY 2017 SHEET 2 OF 2

51

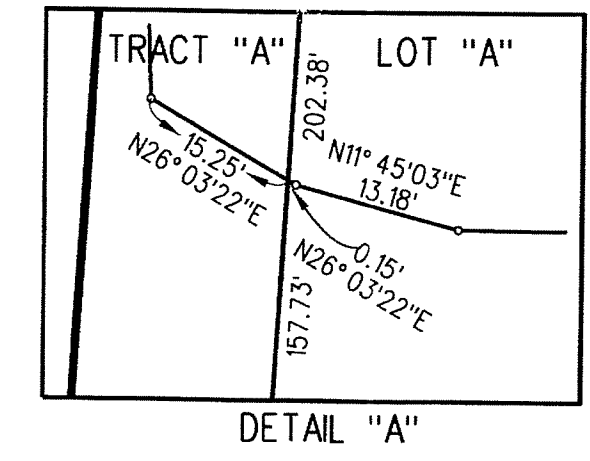
NUMBER	DIRECTION	DISTANCE	NUMBER	DIRECTION	DISTANCE
L1	N85° 51'10"E	2.71'	L22	N27° 47'09"E	17.95'
L2	N84° 08'22"E	11.74'	L23	N29° 02'29"E	8.05'
L3	N26° 03'22"E	15.40'	L24	N10° 37'55"E	1.49'
L4	N11° 45'03"E	13.18'	L25	N27° 50'12"E	20.21'
L5	N03° 17'47"W	17.25'	L26	N01° 29'58"E	22.55'
L6	N08° 03'23"W	9.99'	L27	N61° 11'19"E	22.50'
L7	N18° 06'24"W	9.77'	L28	N14° 46'39"E	37.51'
L8	N05° 47'43"E	21.64'	L29	N34° 52'42"E	32.86'
L9	N17° 55'06"W	16.27'	L30	N61° 56'41"W	5.64'
L10	N18° 52'38"E	8.32'	L31	S64° 06'36"W	11.88'
L11	N11° 34'57"E	6.02'	L32	N12° 14'45"W	7.42'
L12	N13° 17'26"E	8.39'	L33	N66° 11'20"E	13.25'
L13	N05° 11'44"E	25.45'	L34	S87° 21'29"E	1.41'
L14	N02° 13'44"E	10.75'	L35	S78° 37'11"E	8.32'
L15	N34° 16'36"W	22.75'	L36	S87° 39'29"E	8.44'
L16	N25° 52'30"E	17.45'	L37	N27° 37'23"E	46.39'
L17	N03° 39'25"W	13.77'	L38	N06° 41'17"E	15.95'
L18	N01° 09'38"W	22.66'	L39	S85° 00'33"W	13.00'
L19	N09° 14'45"W	15.58'	L40	N18° 35'17"W	8.17'
L20	N00° 12'30"W	7.98'	L41	N36° 40'55"E	16.15'
L21	N11° 13'47"E	27.76'	L42	N82° 28'13"E	12.79'

AMENDED PLAT OF PART OF BOYNTON'S SUBDIVISION
(PLAT BOOK 12, PAGE 45)
NOT PART OF THIS PLAT



- ABBREVIATIONS:**
- CONC. = CONCRETE
 - F.K.A. = FORMALLY KNOWN AS
 - FND. = FOUND
 - N.G.V.D. = NATIONAL GEODETIC VERTICAL DATUM
 - O.R.B. = OFFICIAL RECORD BOOK
 - P.B. = PLAT BOOK
 - P.C.P. = PERMANENT CONTROL POINT
 - P.R.M. = PERMANENT REFERENCE MONUMENT
 - P.S.M. = PROFESSIONAL SURVEYOR AND MAPPER
 - PG. = PAGE
 - R/W. = RIGHT OF WAY
 - U.E. = UTILITY EASEMENT

- LEGEND:**
- = DENOTES PERMANENT REFERENCE MONUMENT (P.R.M.) SET 4"x4" CONCRETE MONUMENT WITH DISK STAMPED "PRM LB4431" UNLESS OTHERWISE NOTED
 - = DENOTES PERMANENT REFERENCE MONUMENT (P.R.M.) SET 4"x4" CONCRETE MONUMENT WITH DISK STAMPED "PRM LB4431" UNLESS OTHERWISE NOTED
 - = DENOTES PROPERTY CORNER - SET 5/8" IRON ROD & CAP "LB4431" UNLESS OTHERWISE NOTED



LIDBERG LAND SURVEYING, INC.
675 West Indiantown Road, Suite 200, Jupiter, Florida 33458 TEL: 561-746-8454

CAD. K:\UST \ 274543 \ 12-45 \ 15-019-306 \ 15-019-306.DGN	REF.	FLD.	PG.	JOB	15-019-306
OFF. CASASUS	DATE	FEBRUARY 2017		DWG.	D15-019P
CKD. D.C.L.	SHEET	2	OF	2	